

G Si grand e la pieta à6

No.12 aus GB-Lbl Add. MS 31390

Anonymer Komponist (~ 1578)

8

Canto

Alto

Tenor I

Tenor II

Basso I

Basso II

8

8 10

8 19

8 28

System 1 (Measures 28-36): This system contains six staves. The first staff features a vocal melody with several measures of rests. The remaining five staves provide piano accompaniment, including chords and moving lines in the right and left hands.

8 37

System 2 (Measures 37-45): This system contains six staves. Measures 37-40 show a vocal melody. Measures 41-45 show piano accompaniment, including chords and moving lines in the right and left hands.

8 46

System 3 (Measures 46-54): This system contains six staves. Measures 46-50 show a vocal melody. Measures 51-54 show piano accompaniment, including chords and moving lines in the right and left hands.

Si grand e la pieta à6

No.12 aus GB-Lbl Add. MS 31390
Anonymer Komponist (~ 1578)

Canto

8 8

8 8

[illegible][illegible][illegible]

Si grand e la pieta à6

No.12 aus GB-Lbl Add. MS 31390
Anonymer Komponist (~ 1578)

Alto



6



12



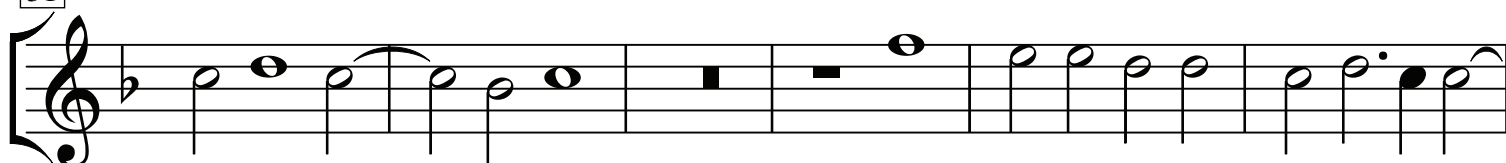
19



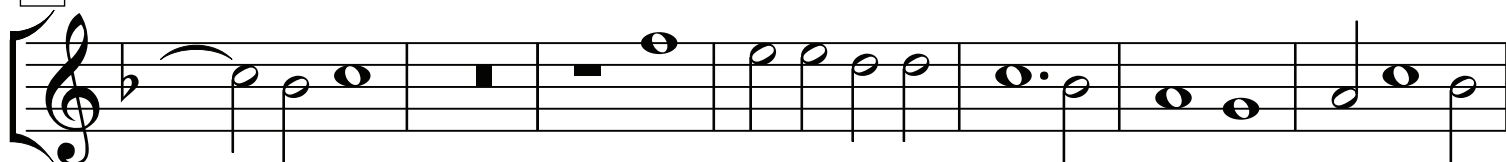
26



31



37



44



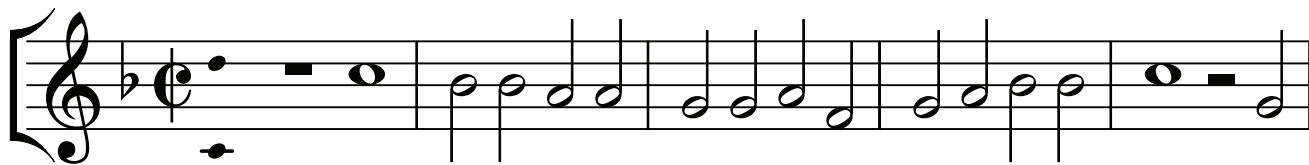
50



Si grand e la pieta à6

No.12 aus GB-Lbl Add. MS 31390
Anonymer Komponist (~ 1578)

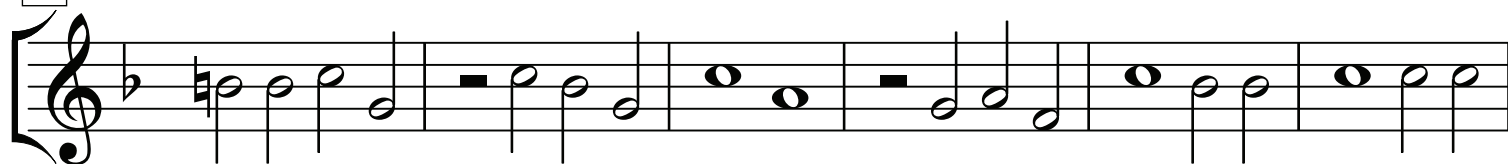
Tenor I



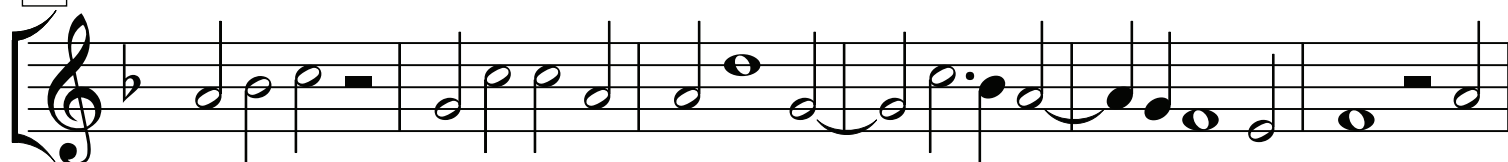
6



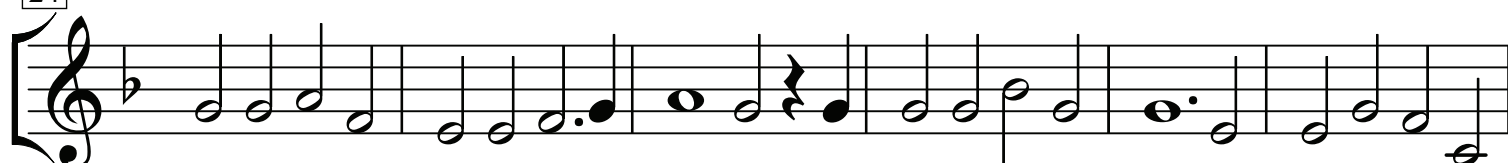
12



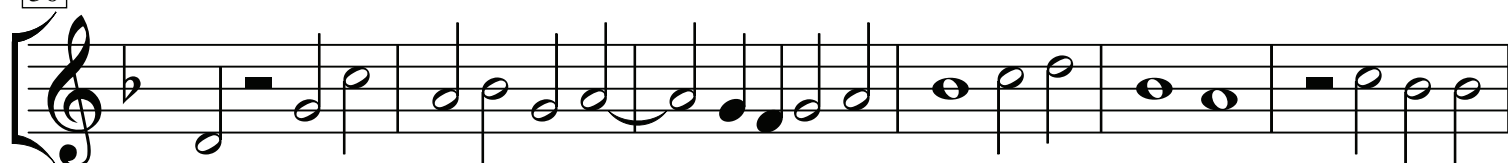
18



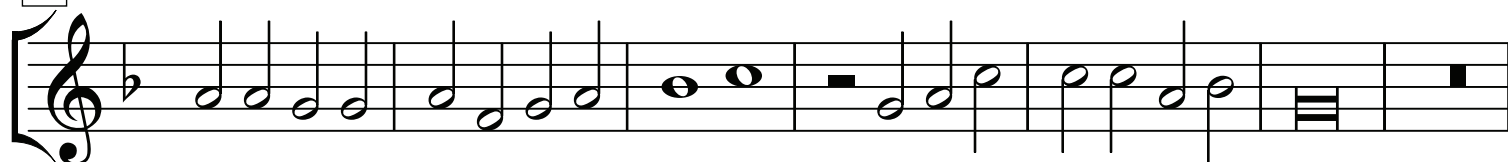
24



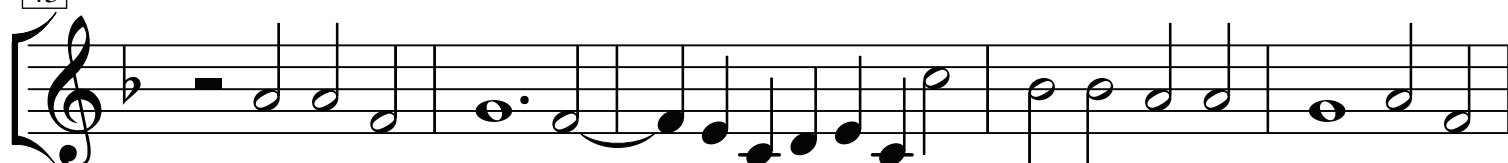
30



36



43



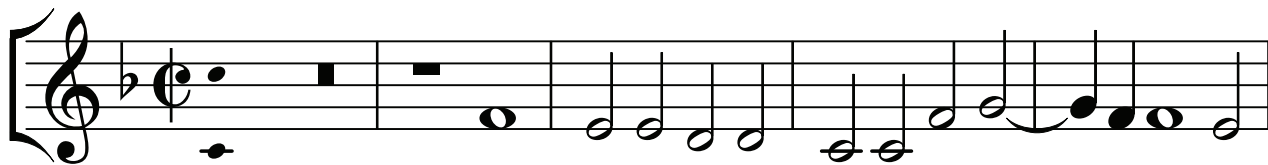
48



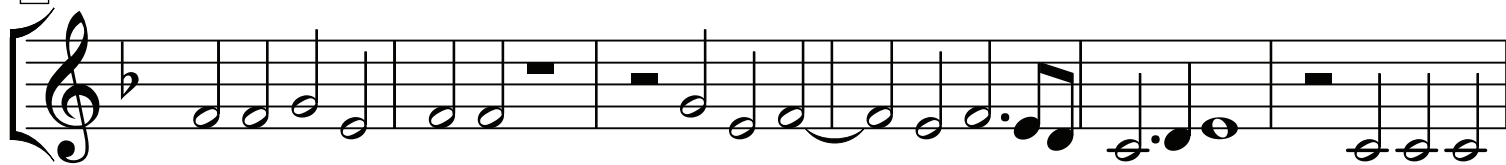
Si grand e la pieta à6

No.12 aus GB-Lbl Add. MS 31390
Anonymer Komponist (~ 1578)

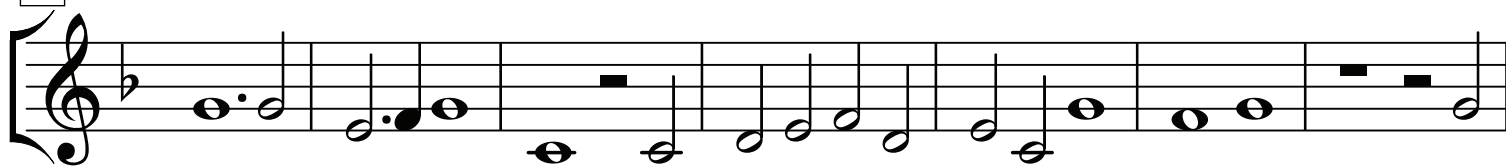
Tenor II



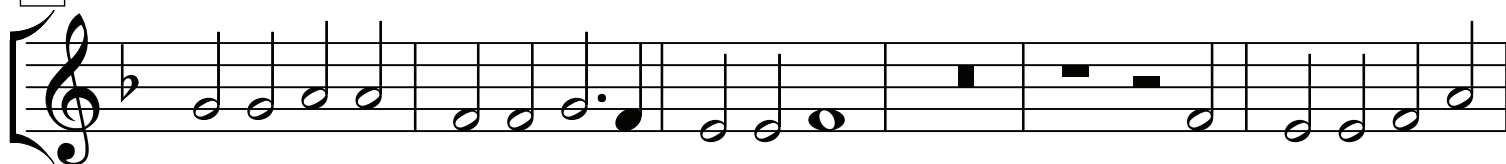
6



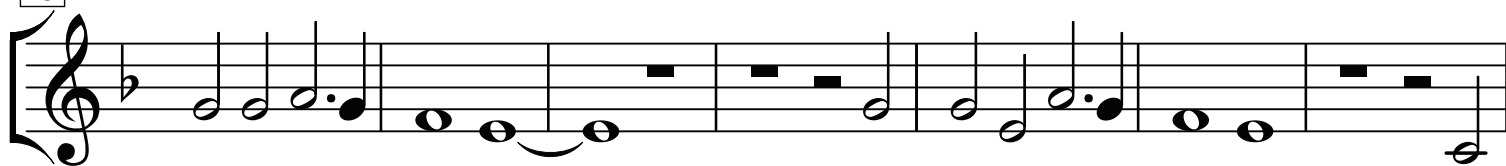
12



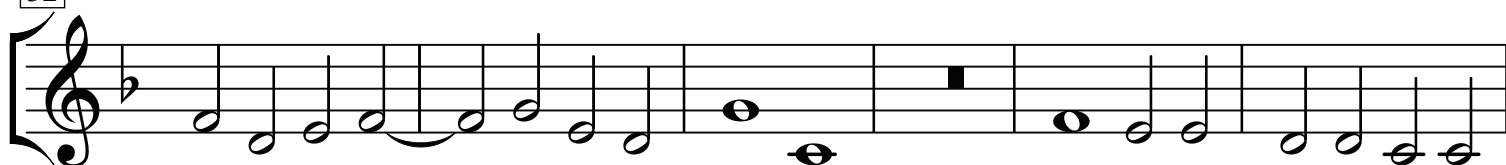
19



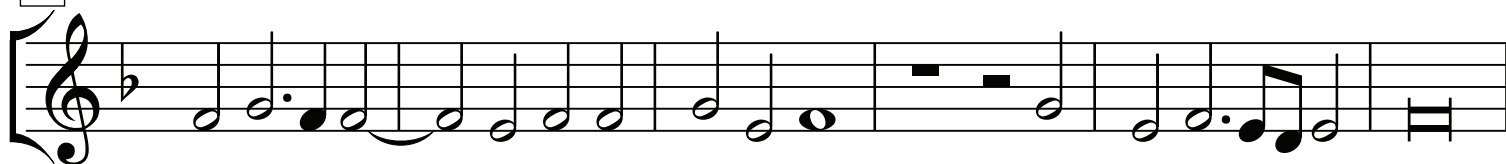
25



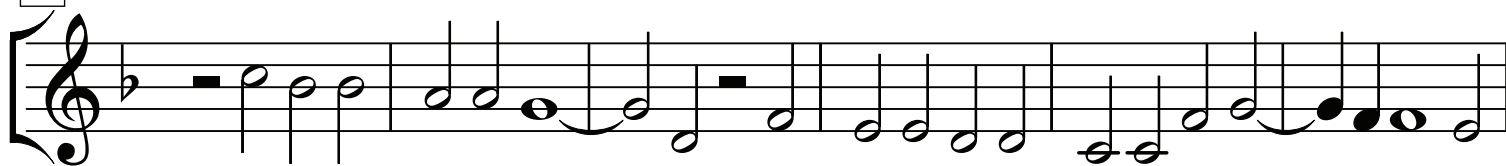
32



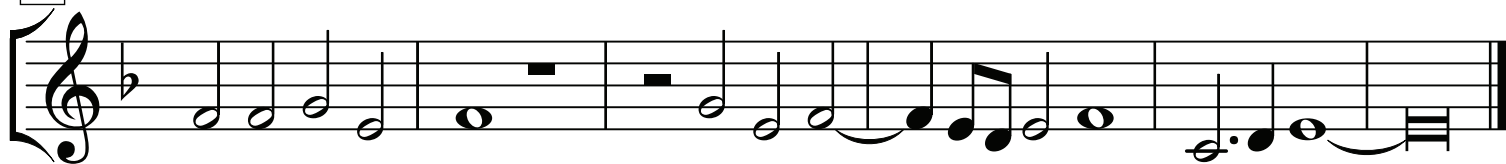
38



44



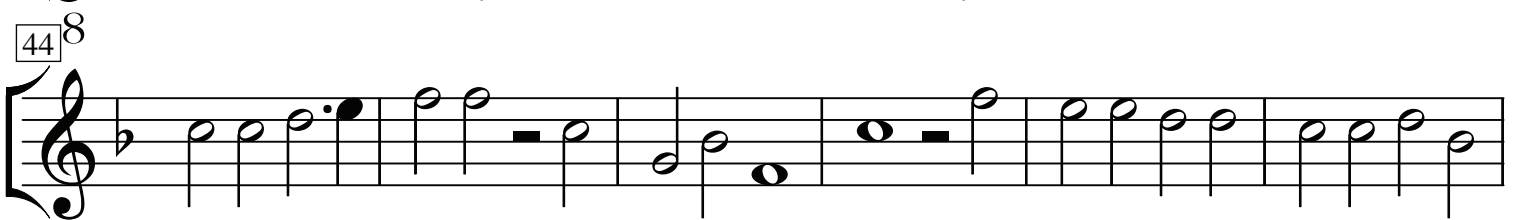
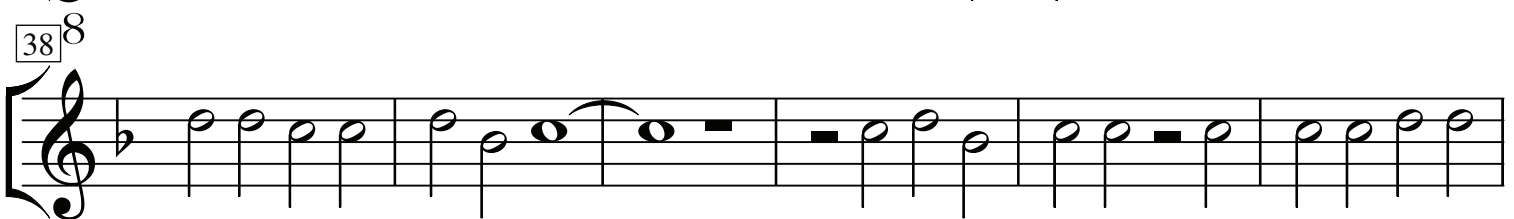
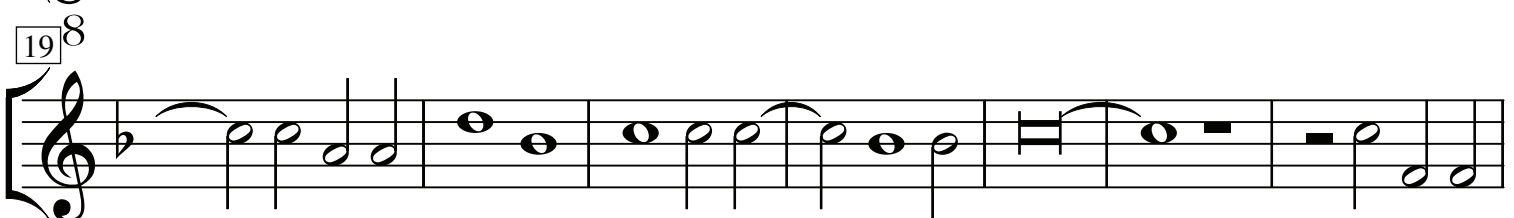
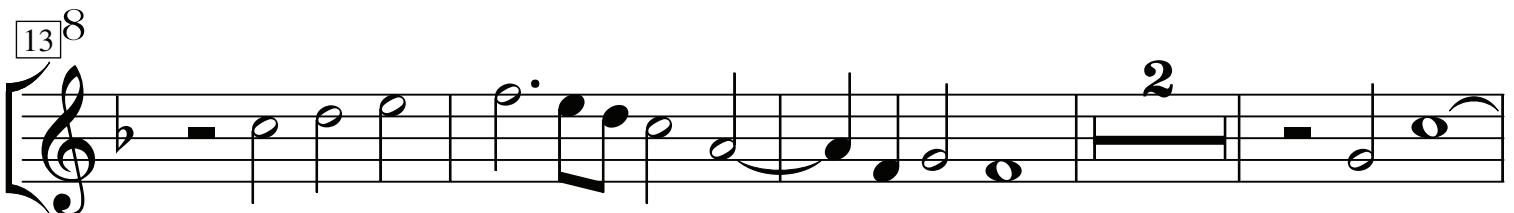
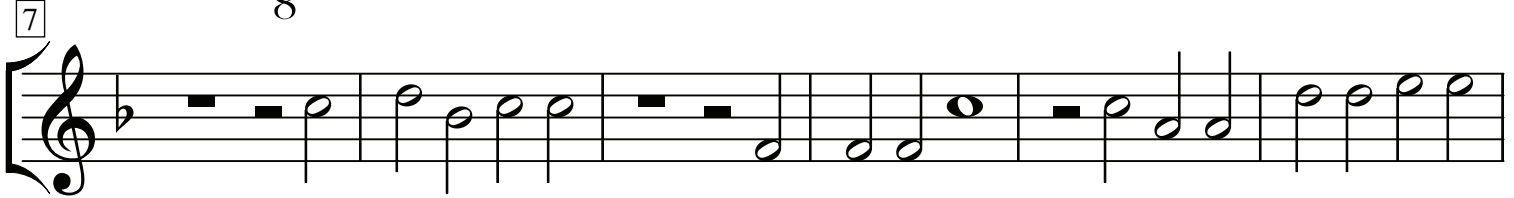
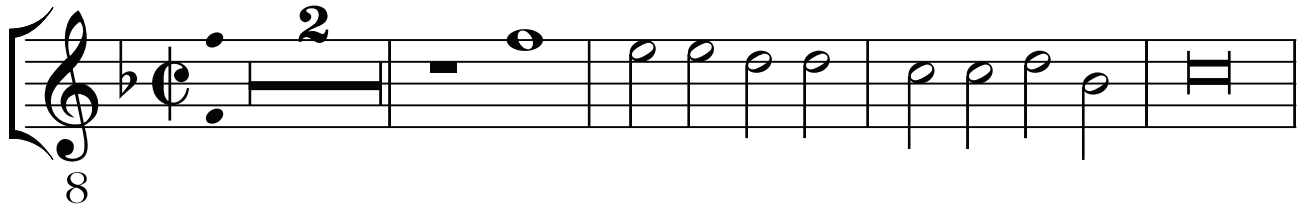
50



Si grand e la pieta à6

No.12 aus GB-Lbl Add. MS 31390
Anonymer Komponist (~ 1578)

Basso I



Si grand e la pieta à6

No.12 aus GB-Lbl Add. MS 31390
Anonymer Komponist (~ 1578)

Basso II

